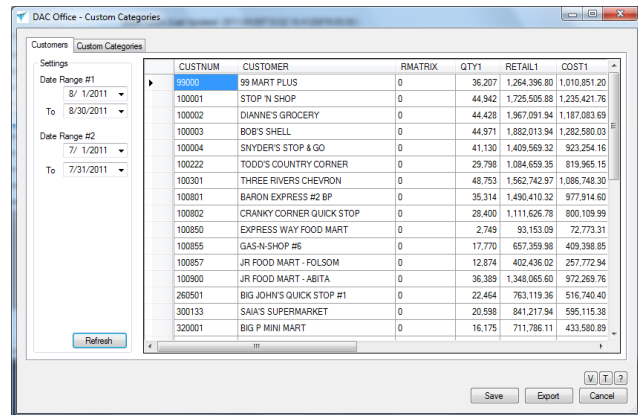


DAC Office Custom Category Report

Overview

The Custom Category report gives you the ability to produce a report that you can give to your customers showing retail profit based on their unique custom categories. Enter two date ranges to compare and then click the Refresh button to populate the grid. The grid shows a list of customers and the amount they spent, retail price, variance and profit percent for both date ranges. Then the variance is calculated showing the difference between the date ranges. Double-click on a customer in the CUSTNUM column to review the categories breakdown. Click on the Save button to save the date ranges.



Category Breakdown by Custom Categories

The quantity, cost, retail price, profit and profit percent are shown by category for each date range. The variance between the date ranges is also shown. If the customer has custom categories set up in DAC, they will be shown instead of the distributor categories.

CATNUM	CATEGORY	RM	QTY1	RETAIL1	COST1	GP1	GM1	QTY2	RETAIL2	COST2	GP2	GM2	VARDOL	VARPER	VARIANCE
10	CIGARETTES		12,620	615,188.90	498,563.86	116,625.04	18.96	15,170	738,078.80	596,154.06	141,924.74	19.23	122,889.90	19.98	25,299.70
20	TOBACCO		2,691	69,281.10	53,938.28	15,342.82	22.15	3,380	85,654.20	67,662.00	17,992.20	21.01	16,373.10	23.63	2,649.38
31	CANDY/GUM		7,881	386,243.30	341,517.90	44,725.40	11.58	10,594	555,161.00	456,086.20	99,074.80	17.85	168,917.70	43.73	54,349.40
41	GROCERY		8,317	143,063.98	73,516.09	69,547.89	48.61	9,116	160,779.10	80,990.30	79,788.80	49.63	17,715.12	12.38	10,240.91
43	DRUGS/HBA		710	5,246.90	3,613.90	1,633.00	31.12	852	6,296.28	4,336.68	1,959.60	31.12	1,049.38	20.00	326.60
50	LIGHTERS		3,988	45,372.62	39,656.17	5,716.45	12.60	4,536	54,704.52	47,337.90	7,366.62	13.47	9,331.90	20.57	1,650.17
60	ENERGY DRINKS		5	0.00	45.00	-45.00	0.00	4	0.00	40.00	-40.00	0.00	0.00	100.00	0.00

Exported Report

Click the Export button to export the report data to Excel. Once in Excel, the report can be saved as a PDF file and emailed to the customer.

CATNUM	CATEGORY	RM	QTY1	RETAIL1	COST1	GP1	GM1	QTY2	RETAIL2	COST2	GP2	GM2	VARDOL	VARPER	VARIANCE
10	CIGARETTES		12,620	615,189	498,564	116,625	18.96	15,170	738,079	596,154	141,925	19.23	122,890	16.65	25,300
20	TOBACCO		2,691	69,281	53,938	15,343	22.15	3,380	85,654	67,662	17,992	21.01	16,373	19.12	2,649
31	CANDY/GUM		7,881	386,243	341,518	44,725	11.58	10,594	555,161	456,086	99,075	17.85	168,918	30.43	54,349
41	GROCERY		8,317	143,064	73,516	69,548	48.61	9,116	160,779	80,990	79,789	49.63	17,715	11.02	10,241
43	DRUGS/HBA		710	5,247	3,614	1,633	31.12	852	6,296	4,337	1,960	31.12	1,049	16.67	327
50	LIGHTERS		3,988	45,373	39,656	5,716	12.60	4,536	54,705	47,338	7,367	13.47	9,332	17.06	1,650
60	ENERGY DRINKS		5	0	45	(45)	0.00	4	0	40	(40)	0.00	0	0.00	5
Totals			36,212	1,264,397	1,010,851	253,546		43,652	1,600,674	1,252,607	348,067		336,277	110.94	94,521